



Directorate-General
for Energy
and Transport



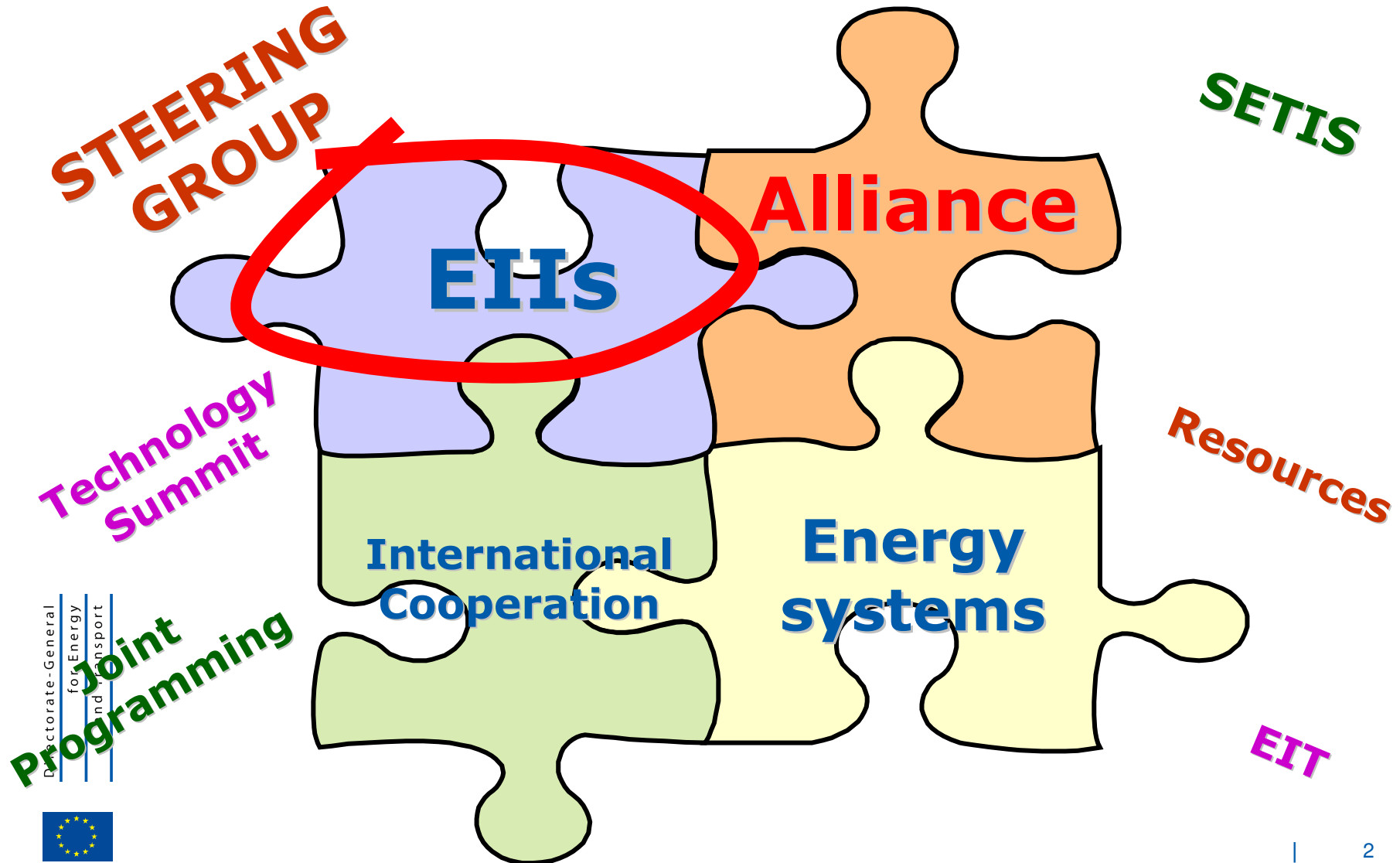
EUROPEAN
COMMISSION

● From SET Plan to an Energy Technology Policy

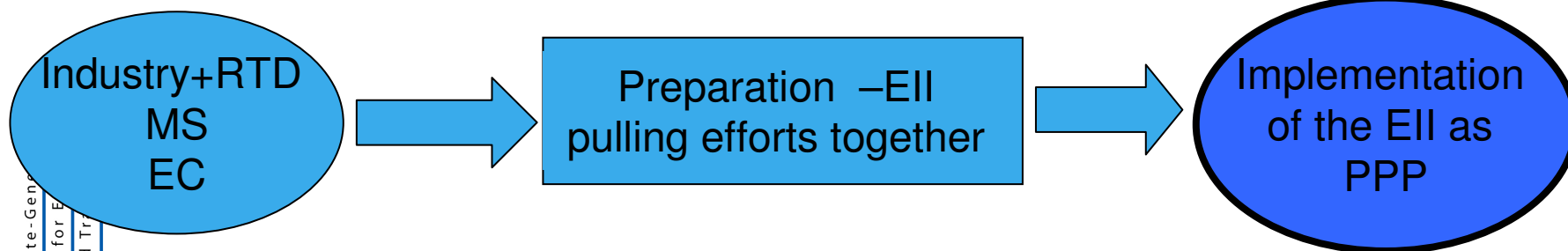
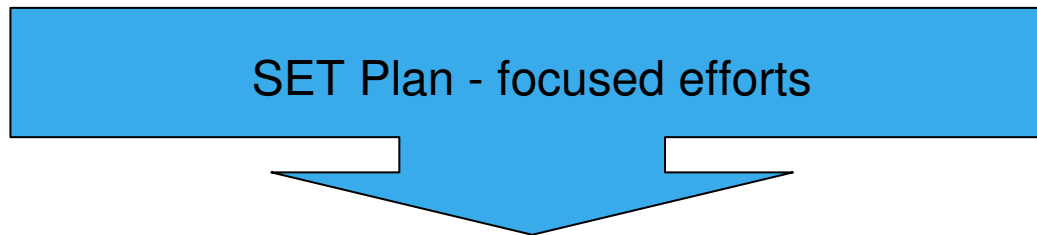
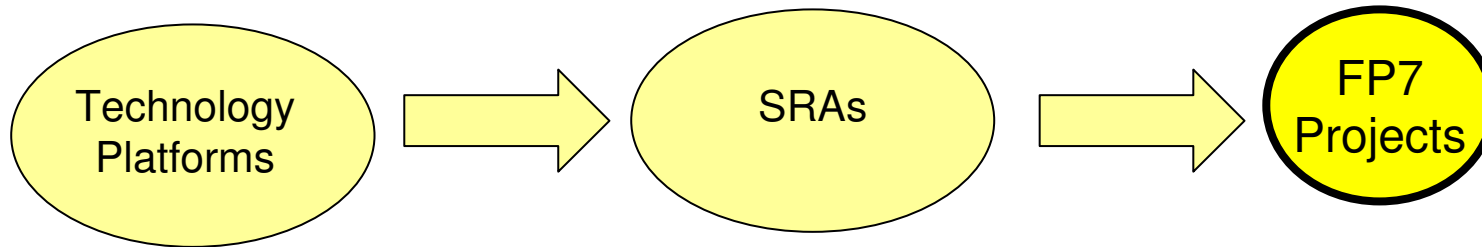
EWEC 2009
Marseille, 17 March 2009

Dr Stefan Tostmann
Head of Unit
Energy Technologies and Research Coordination

● SET-Plan lines of action



● From TPs to actual implementation



Directorate-General
for Energy
and Transport



● EII - outline 1/2

● Objectives

- » Sector/market objectives
- » Technological objectives are derived, but are at the heart of the EII

● Activities - Scope of the EII

- » research, demonstration, innovation component weight vary according to the sector technological development
- » time horizon focus variable

● Actors – cooperation

- » companies/industries – cooperation criteria
- » European Energy Research Alliance, EU, MS
- » other sectors/industrial initiatives

● EII - outline 2/2

● Needs

- » Financial - an estimation of costs based on activities
- » Human resources –EERA+EIT

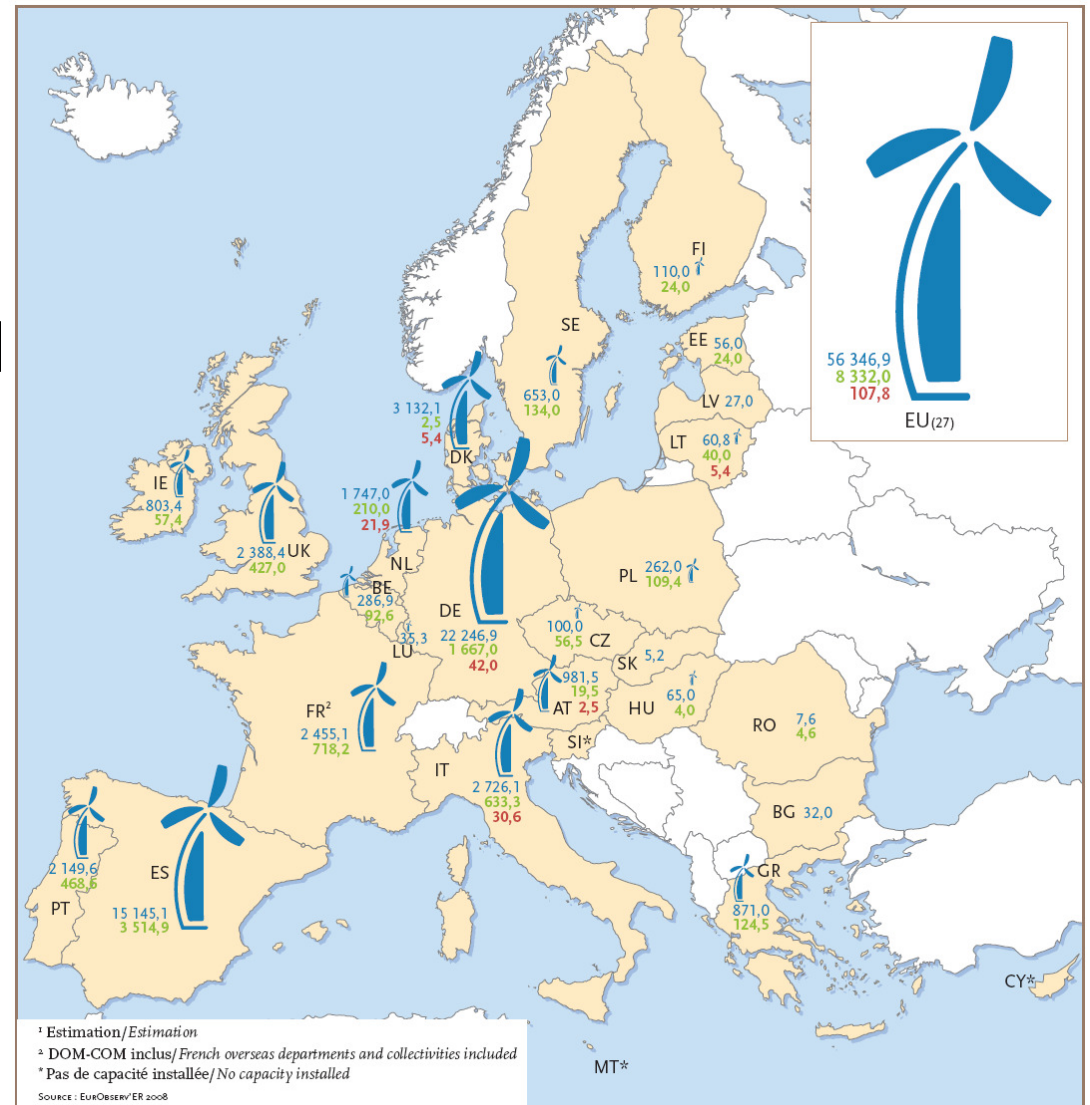
● Resources - public/private effort in aligned strategy

- » Industry + RTD community
- » Member States :National Programmes, ETS
- » EC : FP7, Recovery Plan

● European Wind Initiative - what it takes

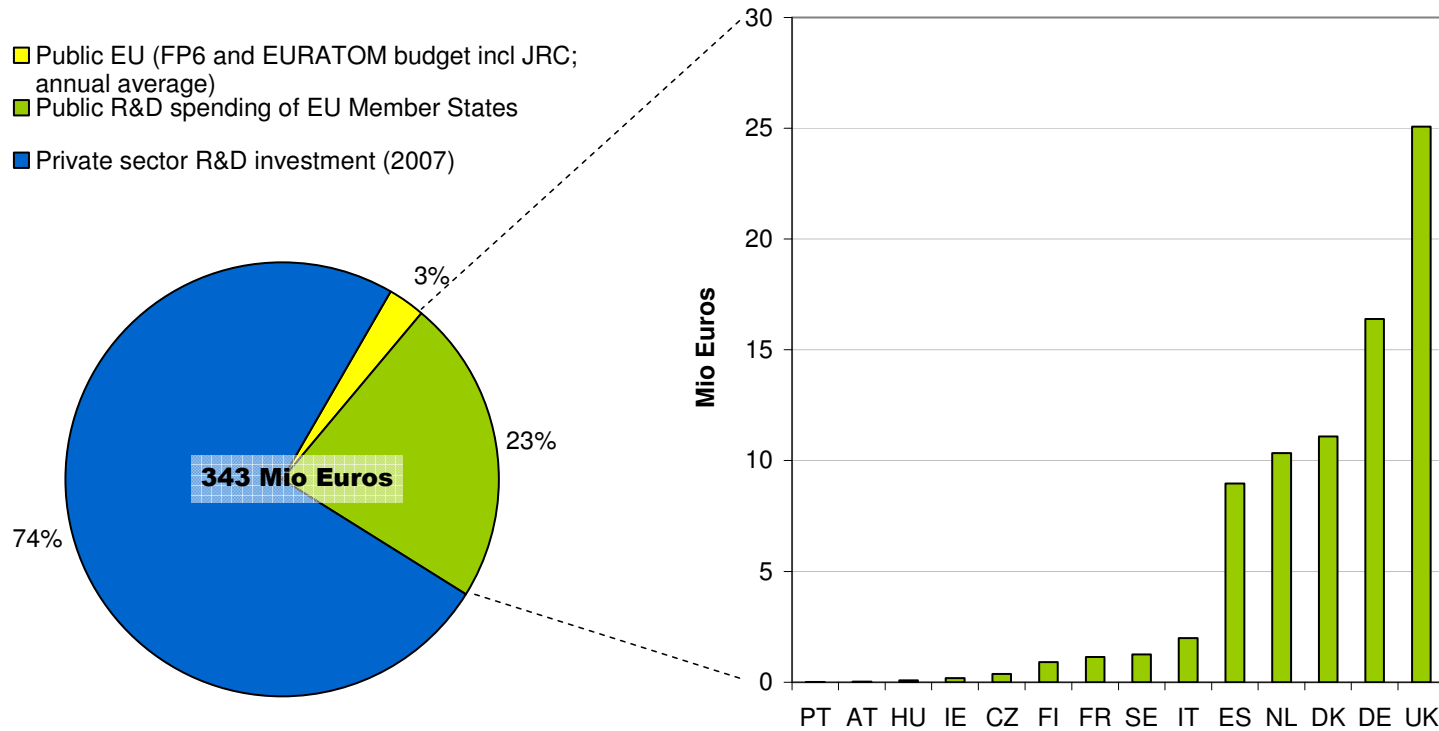
**From 56 to 200 GW
by 2020**

- » Redesigning the wind installations
- » Offshore
- » Delivering the electricity where is needed it – grid integration aspects



Needs: is the current effort sufficient?

R&D investment in wind energy



Source : IPST based on IEA R&D statistics; FP6 data; EU Industrial R&D Investment Scoreboard – not to be quoted

● European Wind Initiative – future steps

● Moving towards implementation of identified actions and activities

- » *MS*: focusing the efforts of national programmes – workshop approach
- » *EC* : Communication on financing: needs and sources
- » *Industry*: matching the public effort
- » *Research*: Wind EERA Programme

● Recovery Plan - challenges

- Focus of proposed actions related to the main challenges identified in EWI
 - » Offshore –increase limitation of finding suitable onshore sites
 - » Grid integration – variability of the wind energy production

● Recovery Plan – actions

- Grid integration
 - » Baltic/Kriegers Flak
 - » North Sea
- New
 - » turbines
 - » structures and components
 - » manufacturing capacities

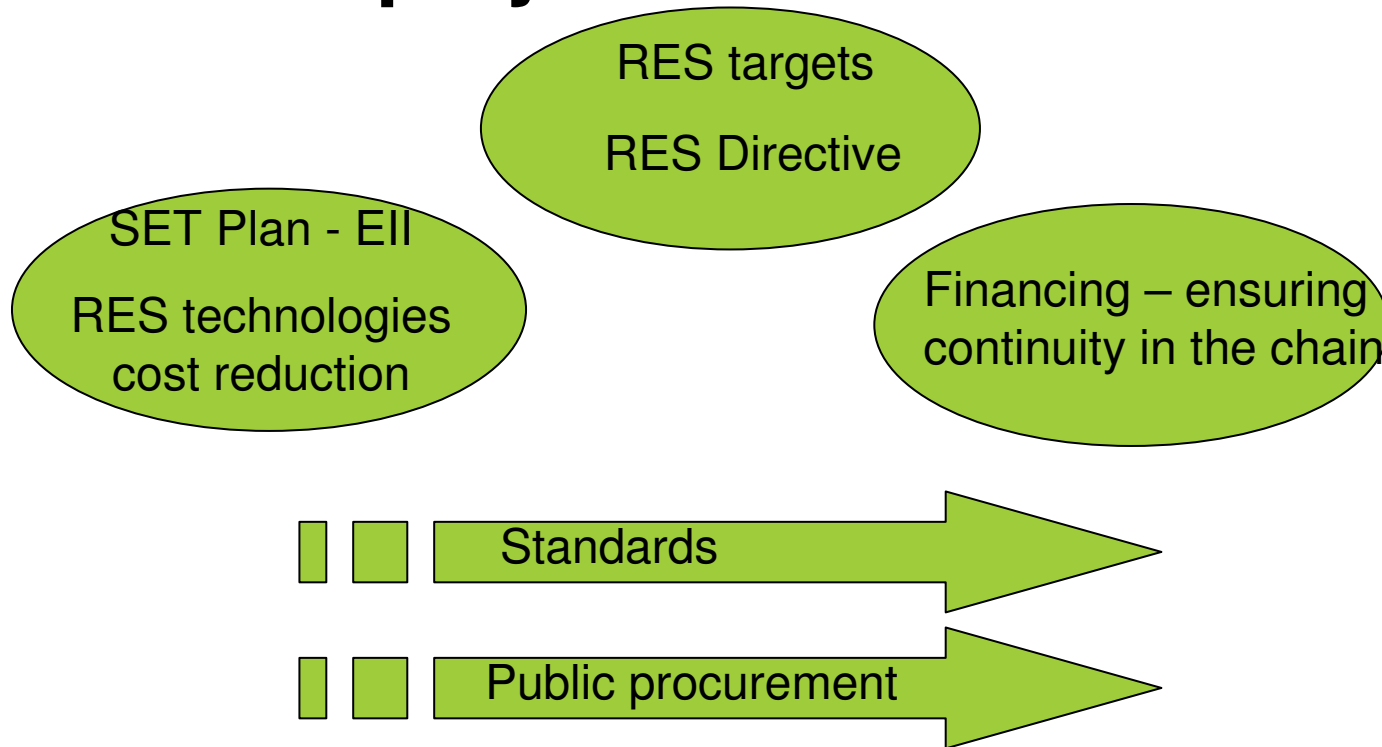


PHASE ONE

— Imera Projects Already Under Development
— Suitable for Offshore Windfarm Connection



● Lead Market Initiative –accelerate market deployment



Wind - example

- Standardisation of components to enable mass production
- Long term spatial planning for large scale wind uptake (investor guide)

● Conclusion

- *SET Plan* - moving from vision to implementation
- *European Wind Initiative* is at the core of this process for the wind sector
- Industry, research, public communities should enhance and focus the effort
- Regulatory framework sets-up the policies and instruments for ensuring market uptake



Towards
a low carbon
future

Thank you for your attention!